

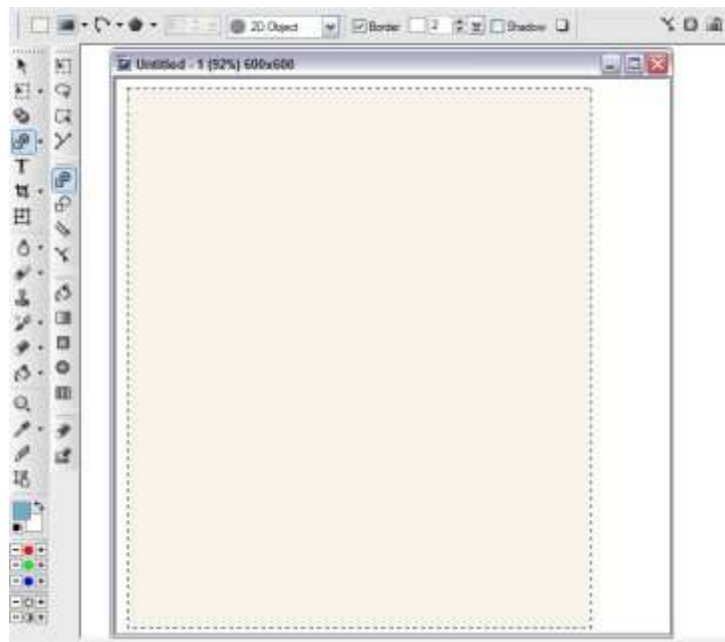
Use shapes to simulate objects cut out from paper.

This tutorial is for more advanced PhotoImpact users and assumes you have knowledge of the tools and their functions.

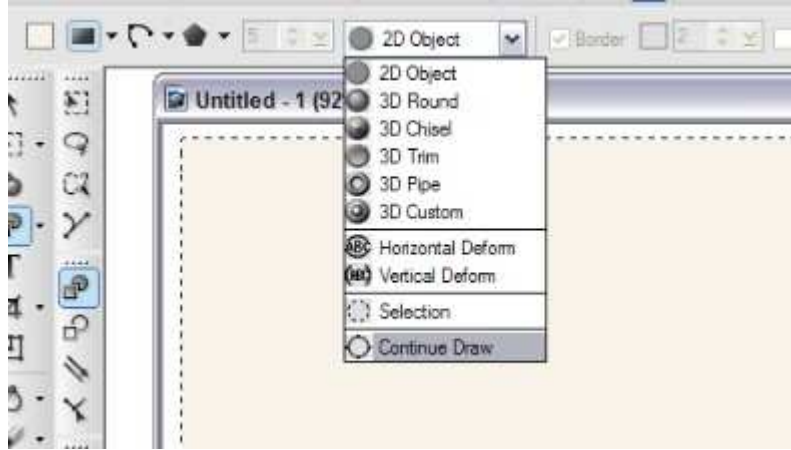
Paper cuts - Easy

Open a 600x600 canvas for plenty of room to work.

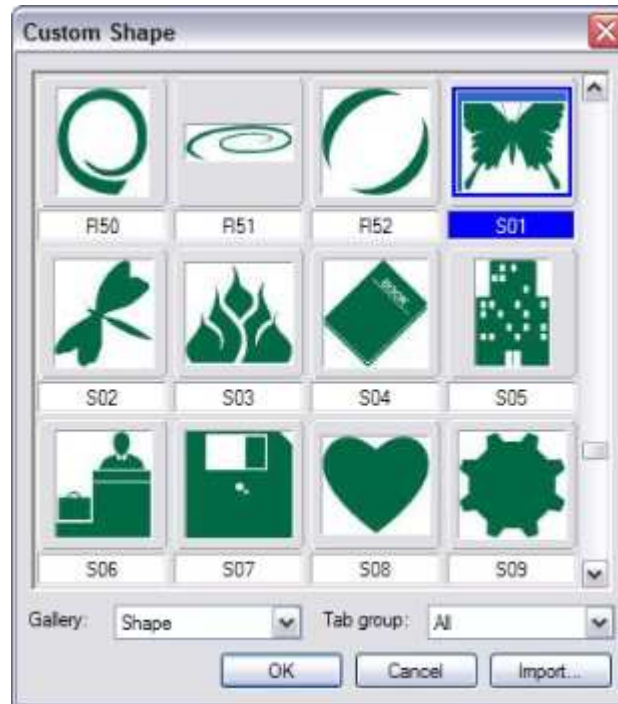
Draw a 2D rectangle in an off-white color to almost fill the canvas. This is your "paper". I also suggest putting a 2-pixel white border around the rectangle. In PI 11&12, use the border option. For older versions, you will have to use the paintbrush and Paint on Edges.



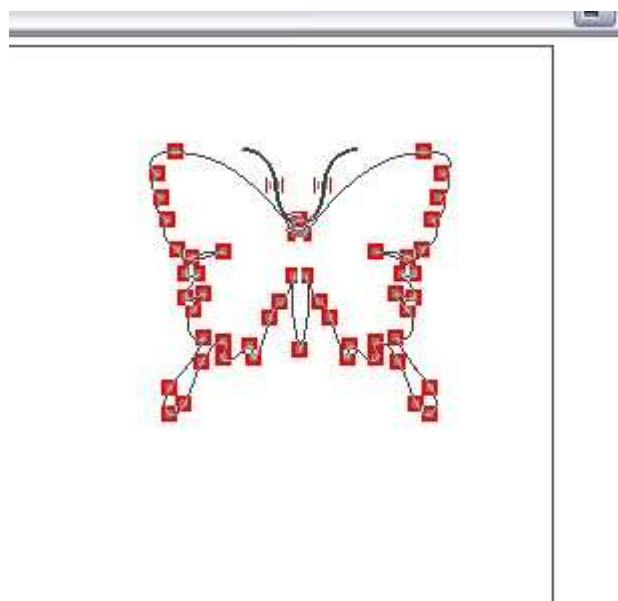
In the drop-down menu, select Continue Draw:



Click on the Shape button and choose Custom Shape. Pick a shape you like...I'm using the butterfly.



Draw your shape in the top right corner of the rectangle, taking note of the dimensions.

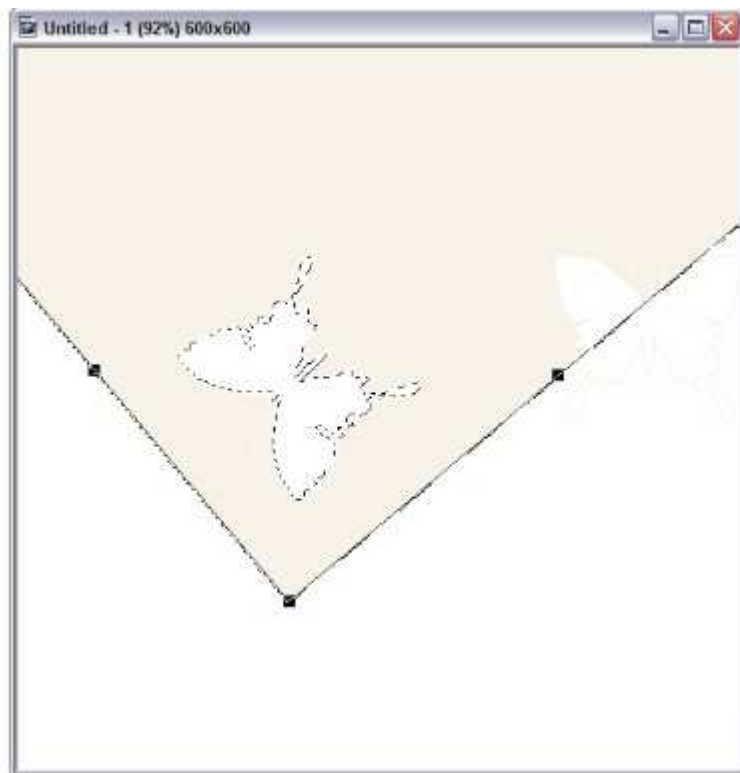


When you have your shape like you want it, go back to 2D object in the drop-down menu.

De-select the rectangle and draw your shape again, the same dimensions, color white. Use the eyedropper tool and put a 1-pixel border around this shape that is the same color as the rectangle.



Click on the rectangle again, Using the Transform Tool, flip it vertically, then rotate it approximately 50 degrees and move it so the top edges are off the canvas.



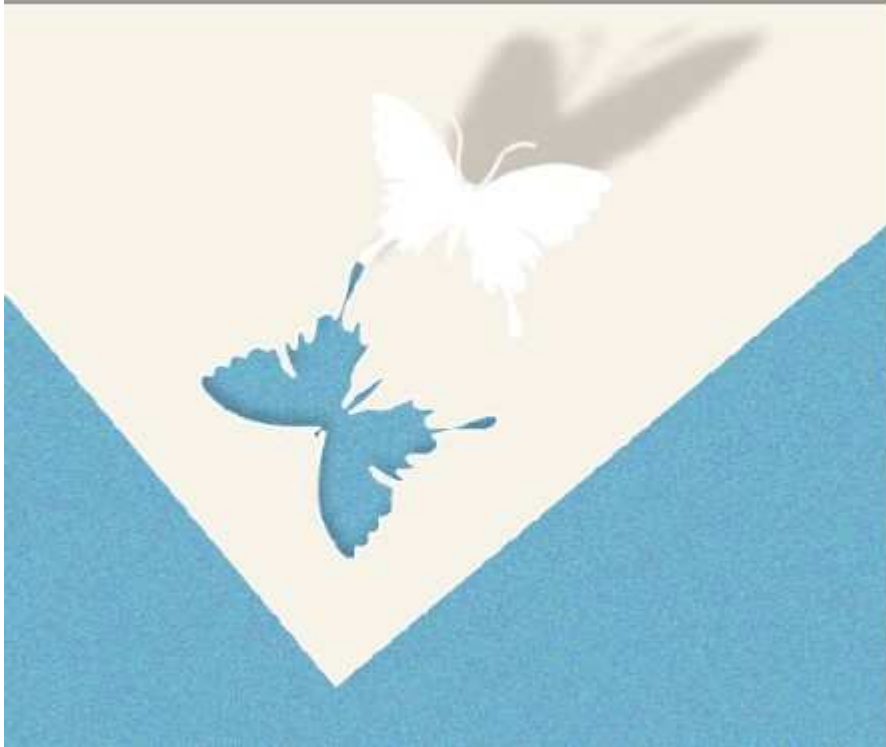
Now bring the extra 2D shape over and rotate it to fit almost opposite of the cut-out. You can also use the Rotate in Virtual 3D to make the shape look as if it is standing upright.



Line up at least one part of the two shapes so that they meet.

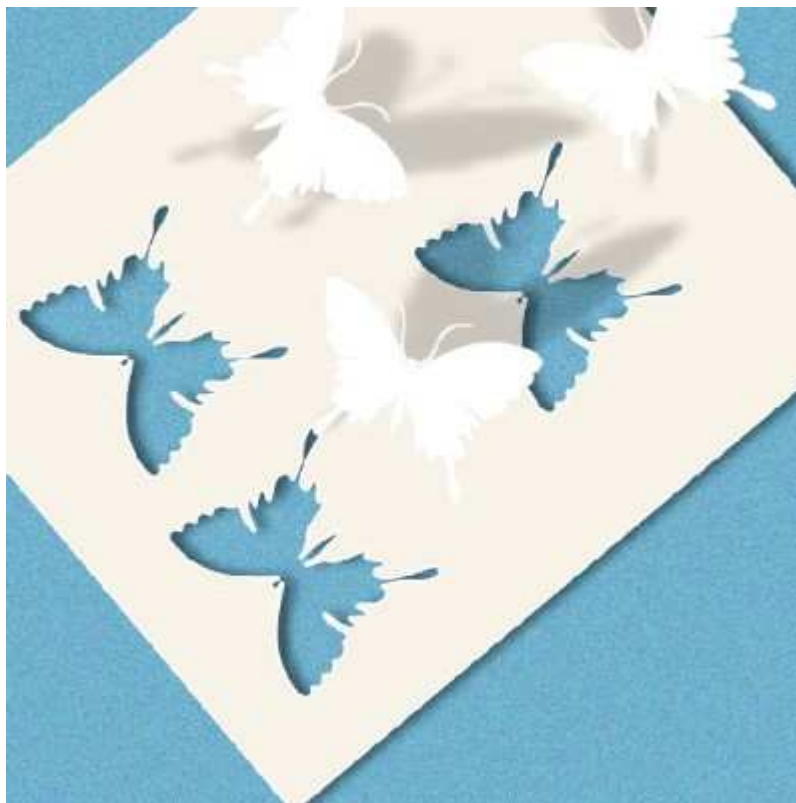


Put a shadow, and split shadow behind the object and the rectangle. Fill the background with a color of your choice and add noise, if desired.



And there is your paper cut-out!

You can duplicate the cut-outs with the Path Edit tool and do something like this:



You are only limited by your imagination and knowledge of PhotoImpact!

Paper Cuts - Advanced

Virtually any object can be used for a paper cut...there are just different steps involved to get a cut-out effect that does not use path shapes.

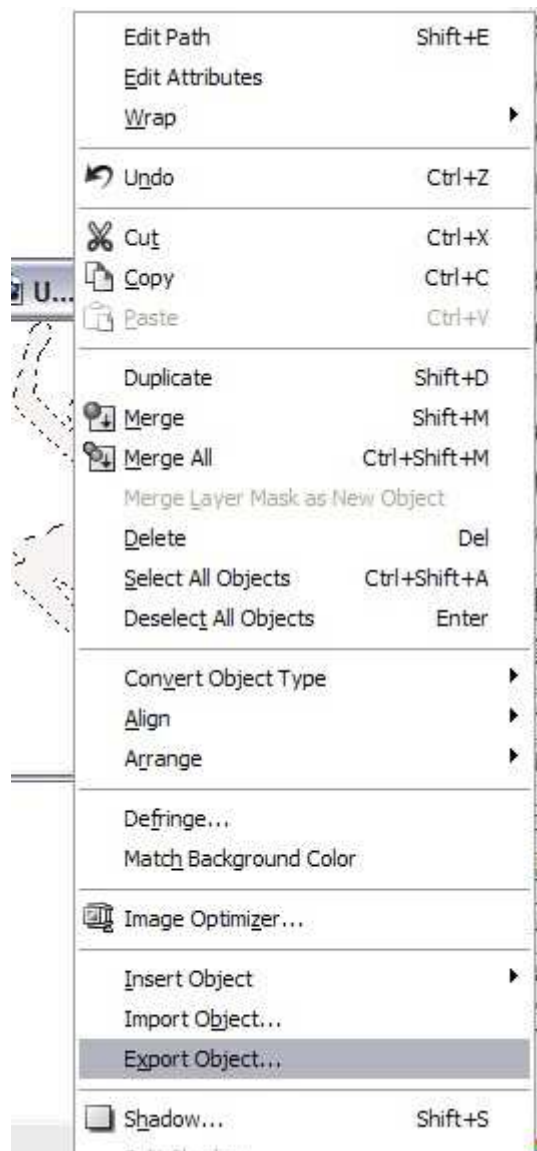
These steps use the Selection and Object tools-export, import selections and objects. If you are not familiar with these tools, follow each step carefully and you should be able to make a cut-out from any shape.

First find a shape for a cut out and open it in it's own window. I am using a ballerina I made with the path tools.

To begin, follow the first two steps above to make the "paper" with a border. R/C and convert to an image.

Activate the window with your object.

Go to Object and in the pop-up window, choose Export object:



Another pop-up screen will appear. Use these settings:

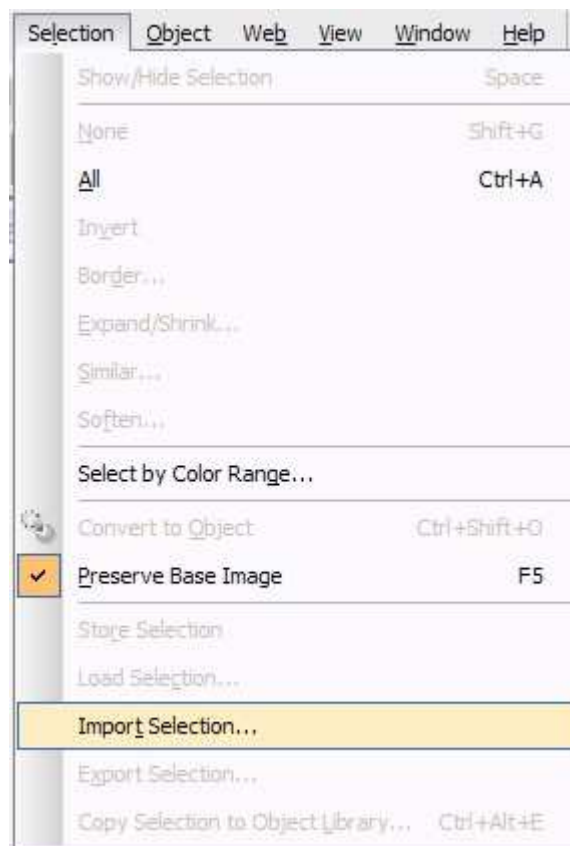


A new window will open and should look something like this:



Go back to the 'paper' canvas and click away from the rectangle to make it inactive.

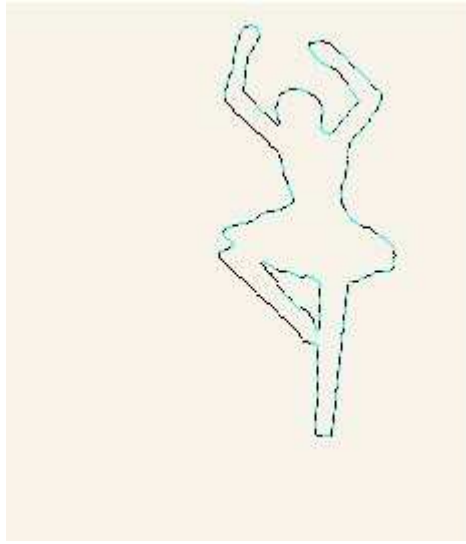
Click on Selection and Import selection.



Use these settings:



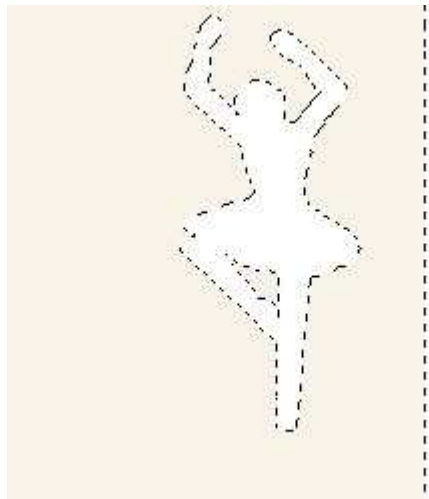
Using the Pick tool, move the Selection to the top right corner of the "paper"



Click on the paper to make it active, R/C and Cut

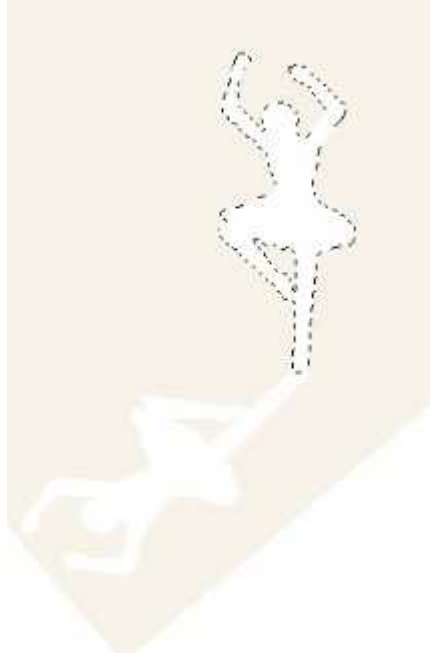


Click on Selection, None and your canvas should look like this:



Now follow the same steps as above to rotate and flip the paper.

Use the original object, colored white like so:



Using the same steps as above, add shadows and a background color.



Use this method to make all kind of cut-outs. A few examples I have done:

